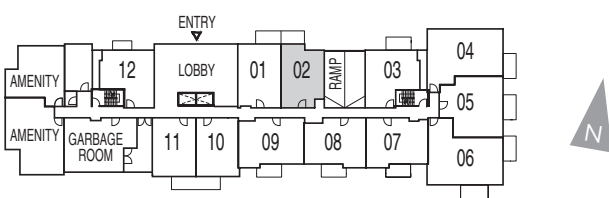
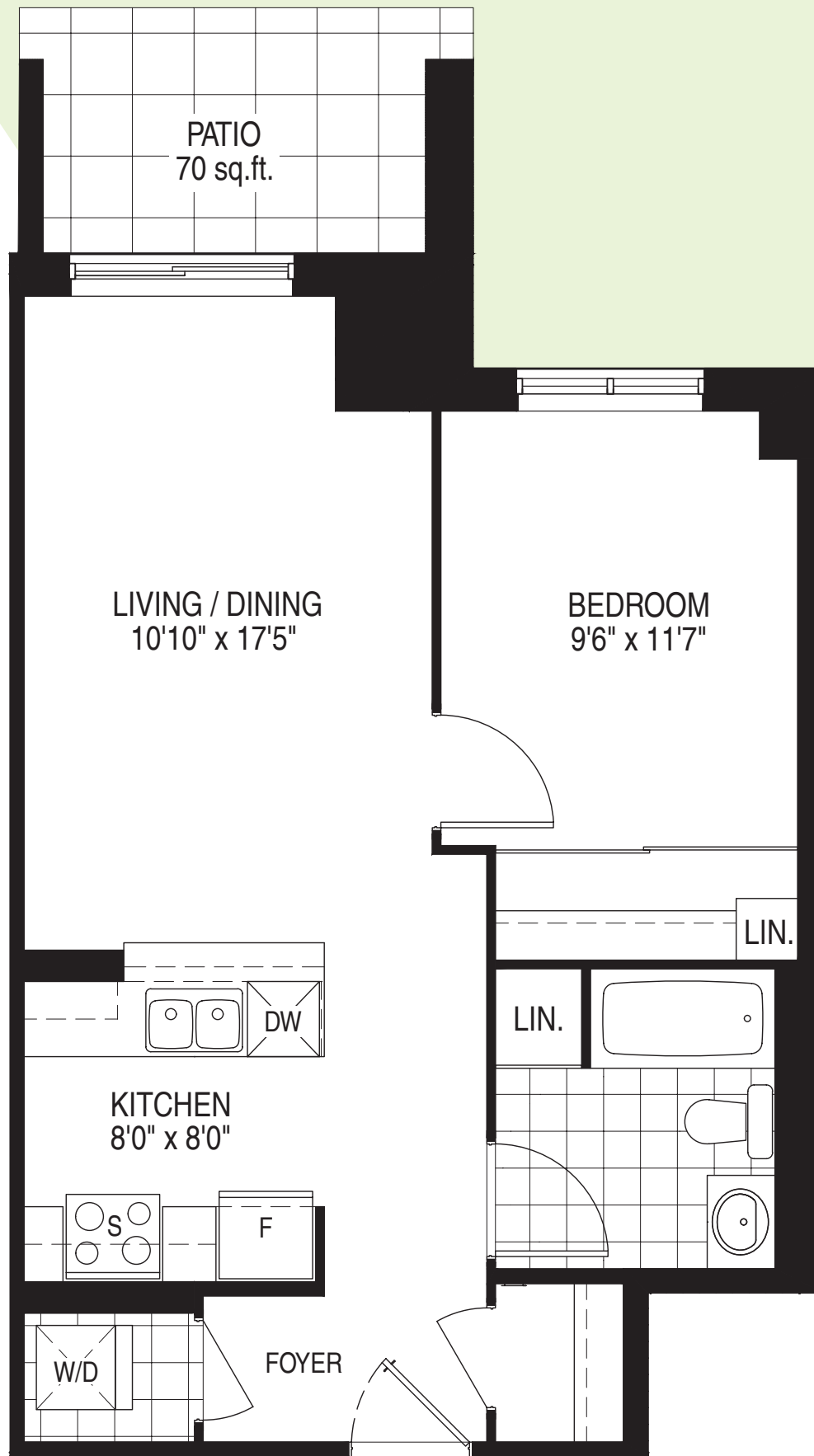


# BASSWOOD (P)

1 Bedroom | 1 Bath  
648 sq.ft. plus 70 sq.ft. Patio



Ground Floor Plan

# CANVAS

ON THE ROUGE

REFER TO LEGALS FOR MORE ACCURATE INFORMATION. MATERIALS, SPECIFICATIONS, UNIT LAYOUTS AND DIMENSIONS ARE SUBJECT TO CHANGE WITHOUT NOTICE. WINDOW SIZES AND TYPE MAY VARY. ACTUAL USABLE FLOOR SPACE MAY VARY FROM THE STATED FLOOR AREA. LANDSCAPING, BALCONY AND PATIO AREAS ARE SUBJECT TO CHANGE. E.&O.E. DECEMBER 2018.

**FLATO**<sup>®</sup>  
DEVELOPMENTS INC.